

# MOVING TECHNOLOGIES



## PARTNER EQUO<sup>®</sup> - PE

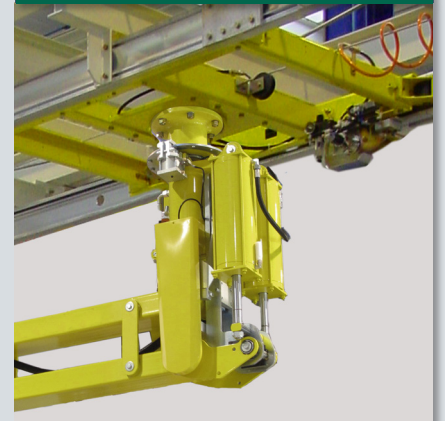
COLUMN PEC



FIXED OVERHEAD PEF



OVERHEAD TROLLEY MOUNTED PES

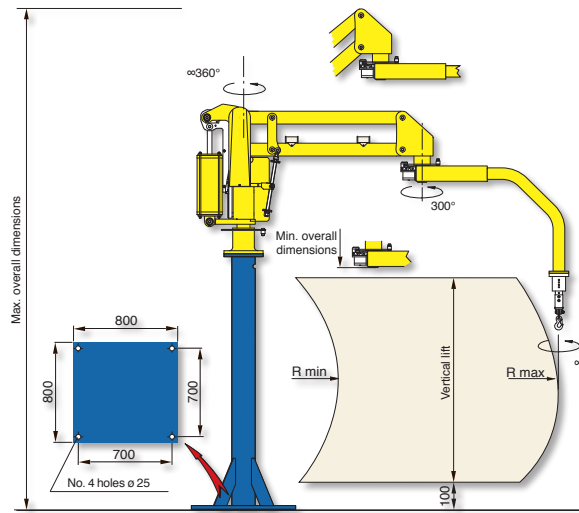


 **dalmec**  
Industrial Manipulators

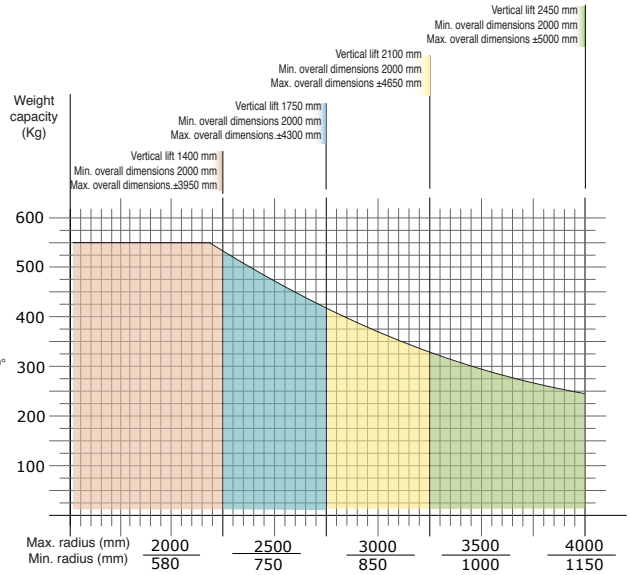
### Pneumatic Manipulator PARTNER EQUO with articulated arms

PARTNER EQUO equipped with special gripping tools, is particularly suitable to manually handle, in a weightless condition, center and off-set loads in any direction. Thus enables the operator to work quickly, with precision and without fatigue, in excellent ergonomic and safety conditions. Its versatile structure also allows to fit in any working environment.

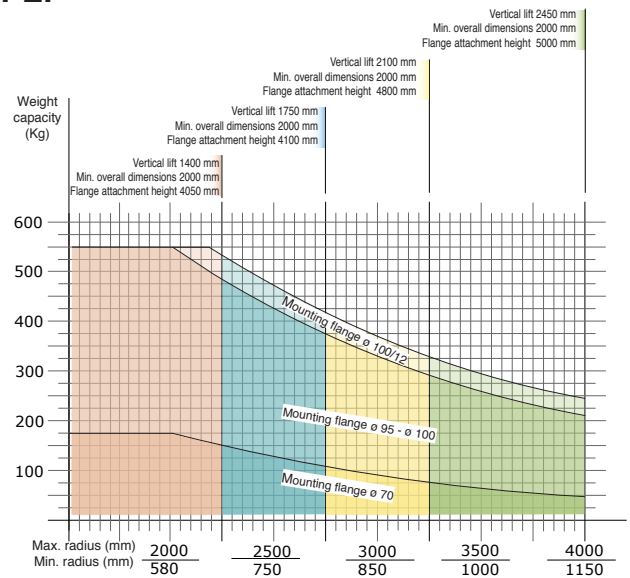
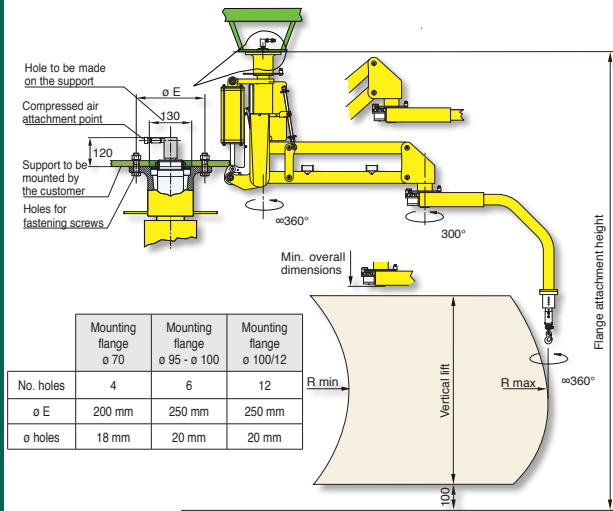
## Partner column mounted - PEC



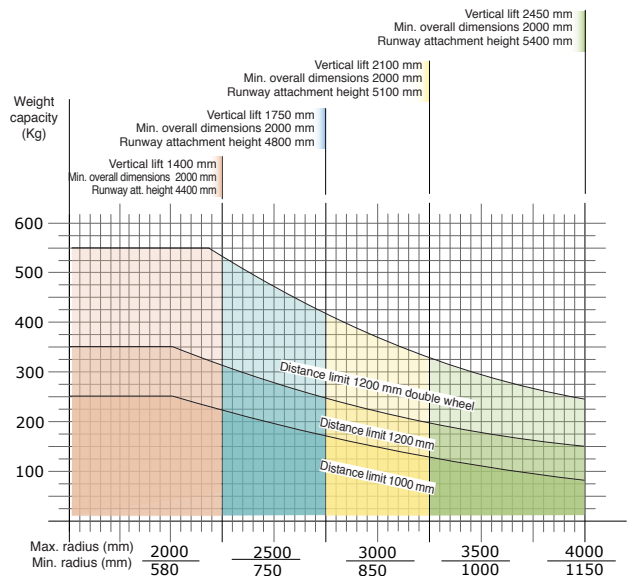
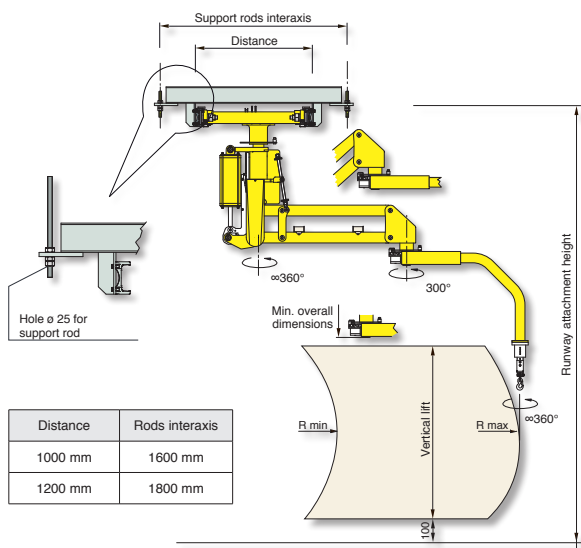
Structural versions: column mounted on fixed base-plate, autostable base-plate of our supply properly dimensioned or with autostable motorised trolley that translates on a simple profile track on the floor.



## Partner overhead mounted - PEF



## Partner overhead trolley mounted - PES



Air supply: Dry and oil-free compressed air min constant 0.7-0.8 MPa



# MOVING TECHNOLOGIES



## PARTNER<sup>®</sup> - PS

COLUMN PSC



FIXED OVERHEAD PSF



OVERHEAD TROLLEY MOUNTED PSS



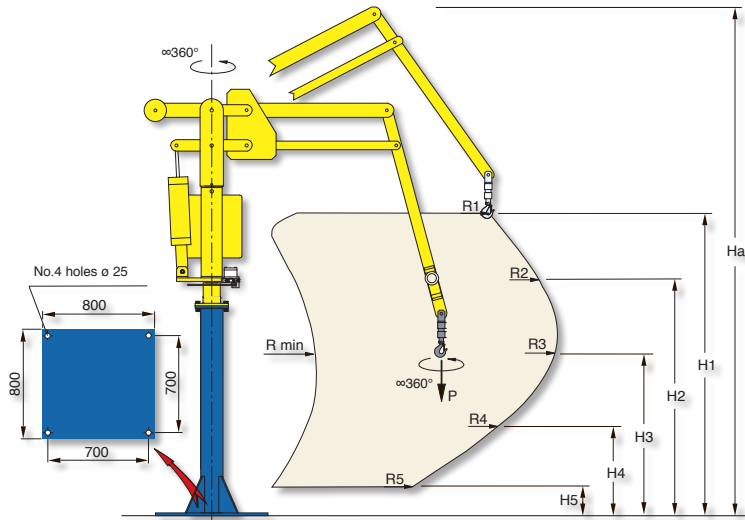
 **dalmec**  
Industrial Manipulators

### Pneumatic Manipulator PARTNER PS with rigid arms

PARTNER PS is a good working assistant for the operator who can work quickly, with precision and without any effort, in excellent ergonomic and safety conditions.

Equipped with special gripping tools, it is particularly maneuverable to manually handle loads in a weightless condition in any direction.

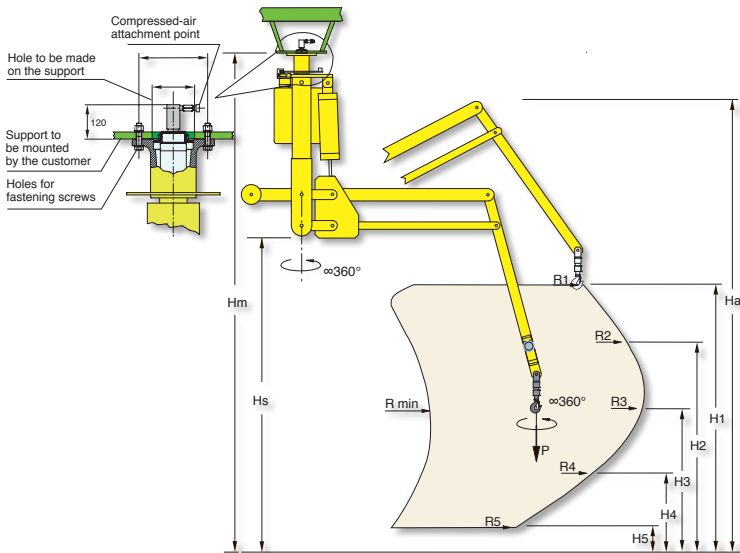
## Partner PS column mounted - PSC



Structural versions: column mounted on fixed base-plate, autostable base-plate of our supply properly dimensioned or with autostable motorised trolley that translates on a simple profile track on the floor.

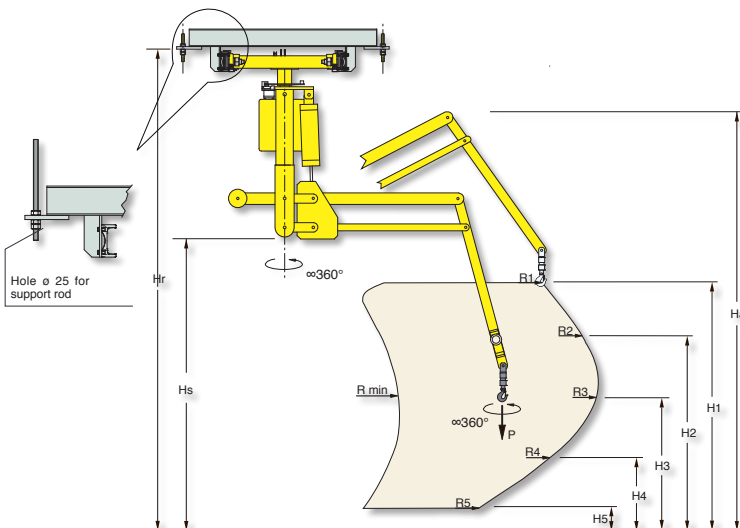
PARTNER PS column mounted "PSC"					
		Normal	Extended		Reinforced
Max weight capacity (P)	Kg 100				
	Kg 150				
	Kg 200				
	Kg 250				
Ha	mm	3700	3800	4050	3500
R min	mm	600	800	1000	700
R1	mm	1900	2100	2650	2200
R2	mm	2200	2500	2900	2250
R3 max	mm	2200	2500	2900	2250
R4	mm	1800	2200	2550	2050
R5	mm	1300	1800	2150	1600
H1	mm	1900	2000	2000	1750
H2	mm	1500	1500	1500	1370
H3	mm	1000	1000	1000	950
H4	mm	500	500	500	550
H5	mm	150	100	100	150
Air supply		Dry and oil-free compressed air min constant 0.7-0.8 MPa			

## Partner PS overhead mounted - PSF



PARTNER PS overhead mounted "PSF"					
		Normal	Extended		Reinforced
Max weight capacity (P)	Kg 100				
	Kg 150				
	Kg 200				
	Kg 250				
Ha	mm	3700	3800	4050	3500
Hm	mm	3850	3850	4100	4080
Hs	mm	2350	2350	2600	2200
R min	mm	600	800	1000	700
R1	mm	1900	2100	2650	2200
R2	mm	2200	2500	2900	2250
R3 max	mm	2200	2500	2900	2250
R4	mm	1800	2200	2550	2050
R5	mm	1300	1800	2150	1600
H1	mm	1900	2000	2000	1750
H2	mm	1500	1500	1500	1370
H3	mm	1000	1000	1000	950
H4	mm	500	500	500	550
H5	mm	150	100	100	150
Air supply		Dry and oil-free compressed air min constant 0.7-0.8 MPa			

## Partner PS overhead trolley mounted - PSS



PARTNER PS overhead trolley mounted "PSS"					
		Normal	Extended		Reinforced
Max weight capacity (P)	Kg 100				
	Kg 150				
	Kg 200				
	Kg 250				
Ha	mm	3700	3800	4050	3500
Hr	mm	4200	4200	4450	4420
Hs	mm	2350	2350	2600	2200
R min	mm	600	800	1000	700
R1	mm	1900	2100	2650	2200
R2	mm	2200	2500	2900	2250
R3 max	mm	2200	2500	2900	2250
R4	mm	1800	2200	2550	2050
R5	mm	1300	1800	2150	1600
H1	mm	1900	2000	2000	1750
H2	mm	1500	1500	1500	1370
H3	mm	1000	1000	1000	950
H4	mm	500	500	500	550
H5	mm	150	100	100	150
Air supply		Dry and oil-free compressed air min constant 0.7-0.8 MPa			



# MOVING TECHNOLOGIES



## MAXIPARTNER<sup>®</sup> - MX

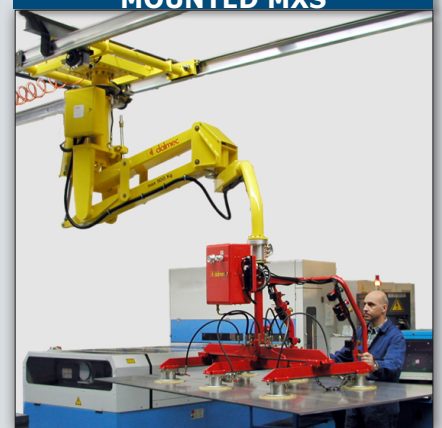
COLUMN MXC



FIXED OVERHEAD MXF



OVERHEAD TROLLEY MOUNTED MXS

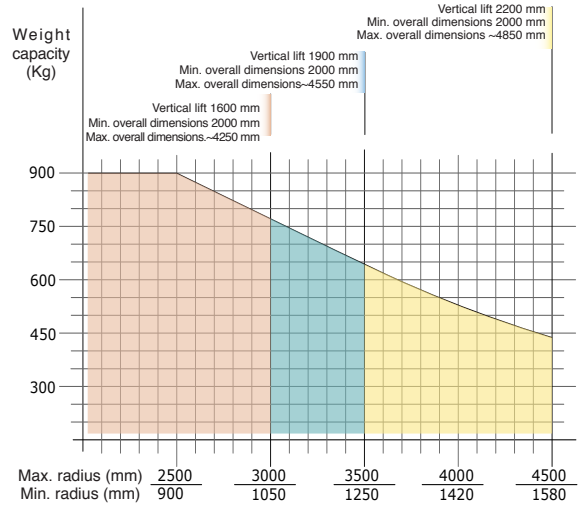
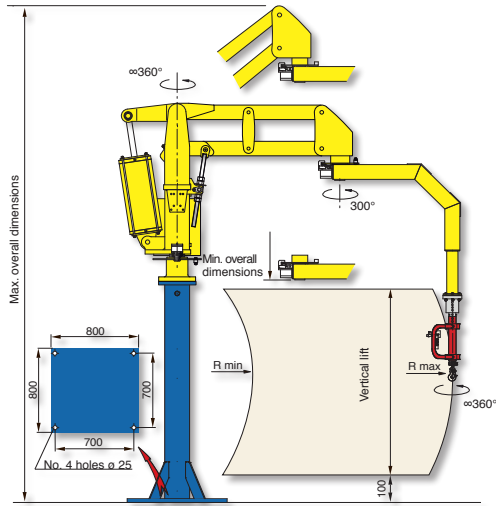


 **dalmeccan**  
Industrial Manipulators

**Pneumatic Manipulator MAXIPARTNER MX with articulated arms**

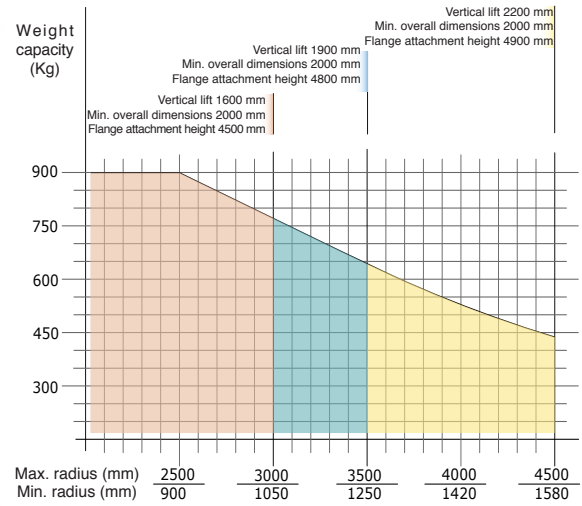
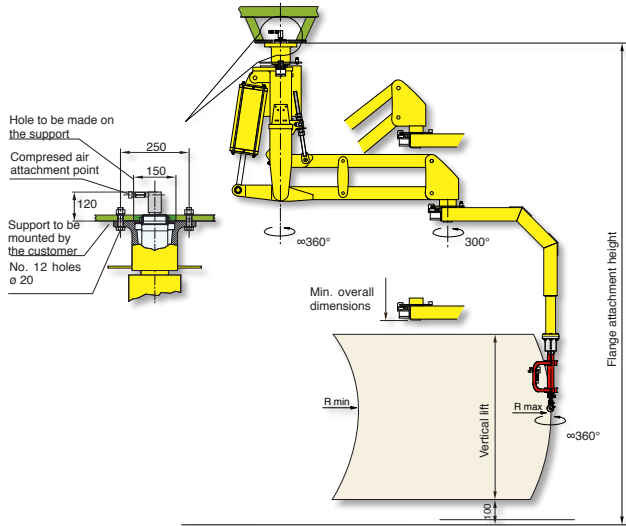
MAXIPARTNER MX, designed and realized particularly for difficult handlings, meets the requirement to move heavy and off-set loads, in any direction, allowing the operator to work with the minimum effort in good ergonomic and safety conditions. Its slim and strong structure eliminates the "drifting" effect.

## Maxipartner column mounted - MXC

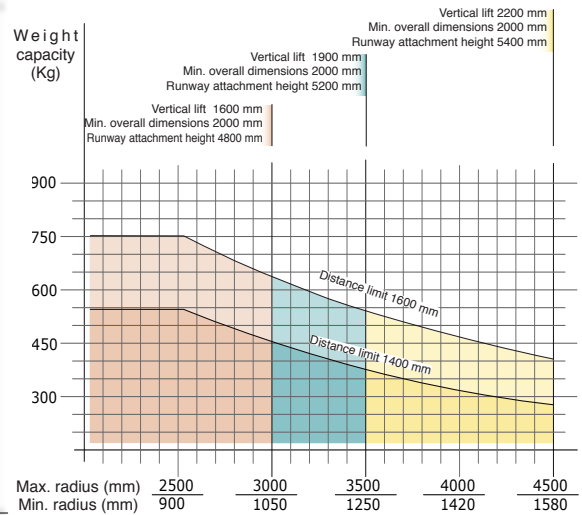
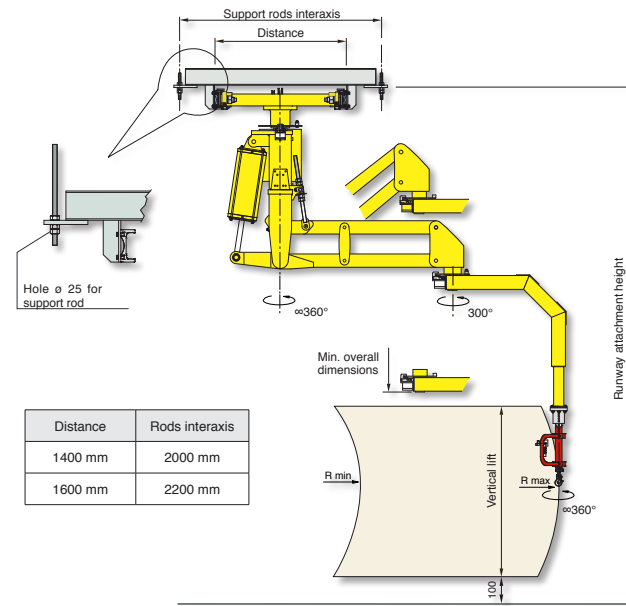


Structural versions: column mounted on fixed base-plate, autostable base-plate of our supply properly dimensioned or with autostable motorised trolley that translates on a simple profile track on the floor.

## Maxipartner overhead mounted - MXF



## Maxipartner overhead trolley mounted - MXS

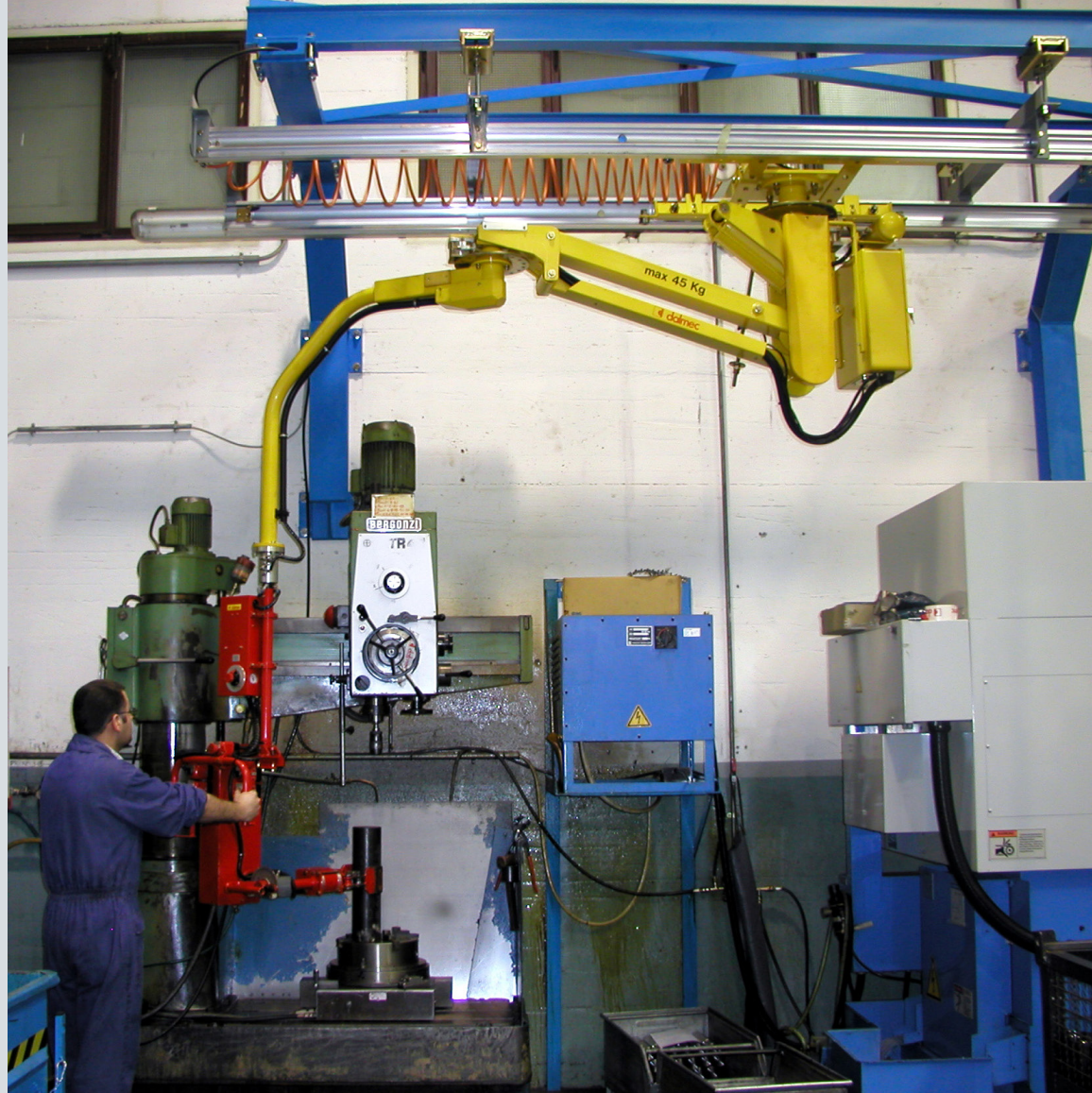


Air supply: Dry and oil-free compressed air min constant 0.7÷0.8 MPa





# MOVING TECHNOLOGIES

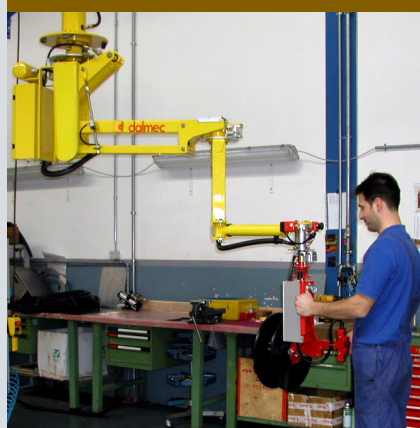


## MICROPARTNER® - MI

COLUMN MIC



FIXED OVERHEAD MIF



OVERHEAD TROLLEY  
MOUNTED MIS



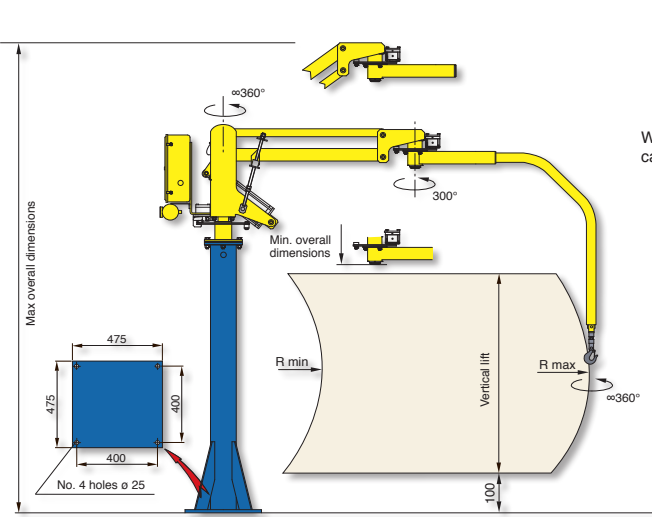
 **dalmec**  
Industrial Manipulators

### Pneumatic Manipulator MICROPARTNER MI with articulated arms

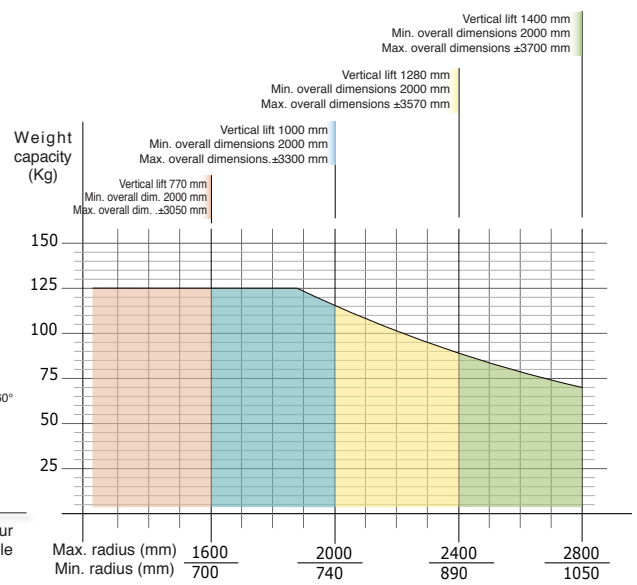
Due to the reduced dimensions, the MICROPARTNER MI is a lifting device particularly easy to handle, designed to move in a weightless condition medium-light, center and off-set loads in any direction. Equipped with special gripping tools it allows the operator to work quickly, with precision and without effort, in excellent ergonomic and safety conditions.

# MICROPARTNER® - MI

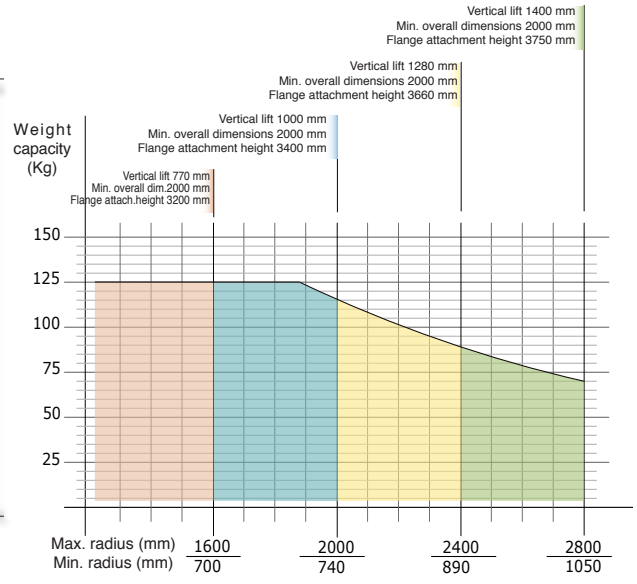
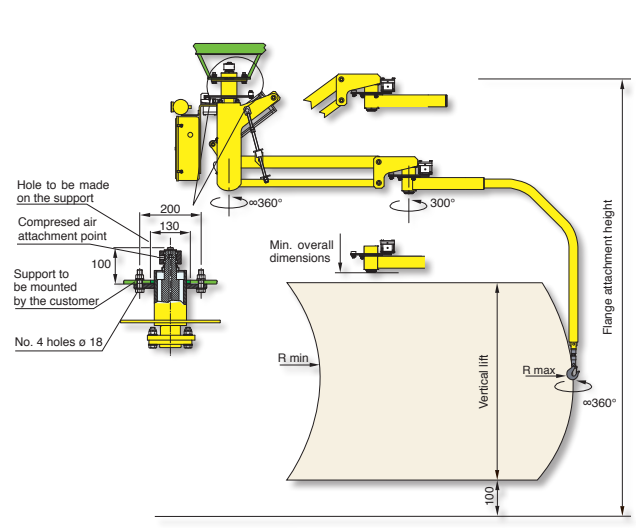
## Micropartner column mounted - MIC



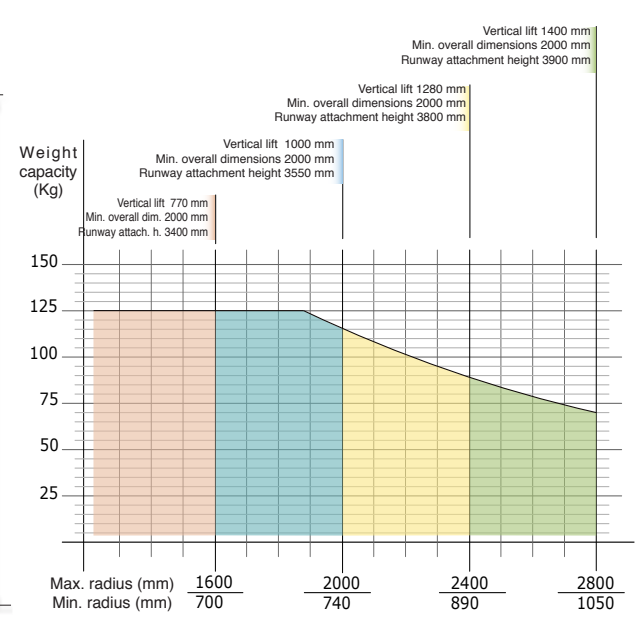
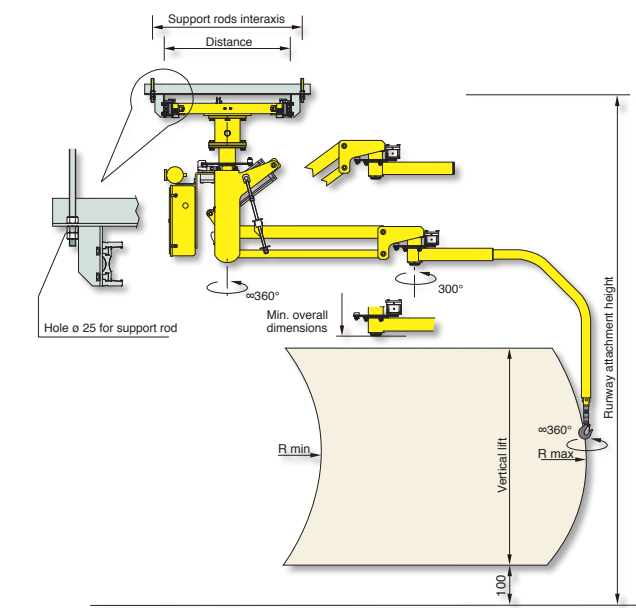
Structural versions: column mounted on fixed base-plate, autostable base-plate of our supply properly dimensioned or with autostable motorised trolley that translates on a simple profile track located on the floor.



## Micropartner overhead mounted - MIF



## Micropartner overhead trolley mounted - MIS



Air supply: Dry and oil-free compressed air min constant 0.7-0.8 MPa



Industrial Manipulators

Configuration and measurements may change upon the Customer's specific requirements

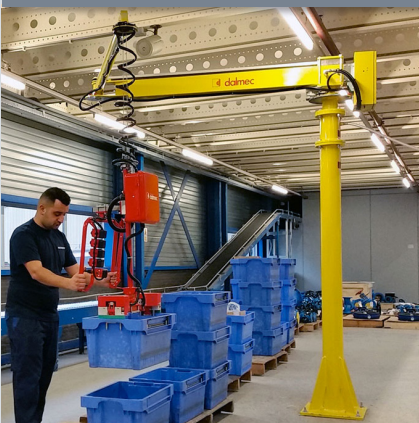


# MOVING TECHNOLOGIES



## POSIFIL® - PF

COLUMN PFC



FIXED OVERHEAD PFF



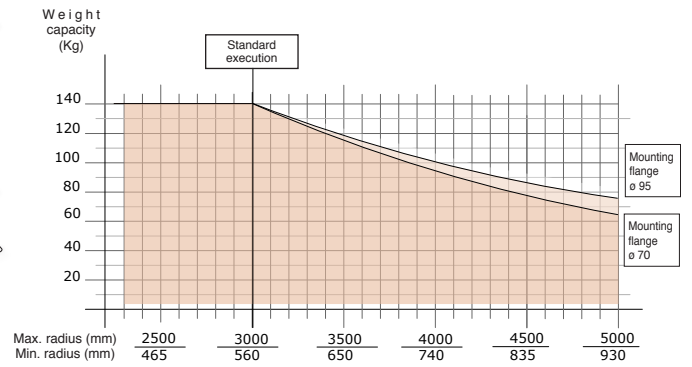
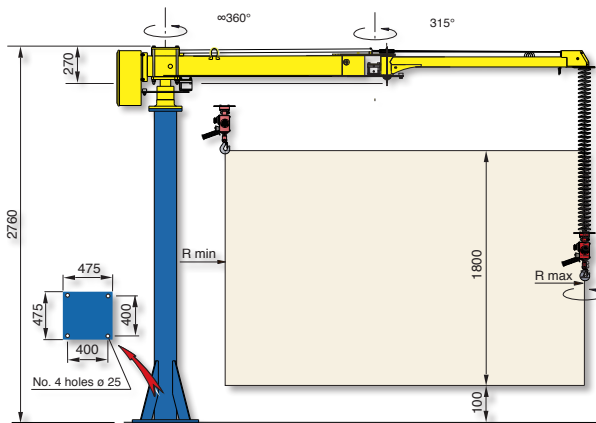
OVERHEAD TROLLEY  
MOUNTED PFS



### Pneumatic Manipulator POSIFIL PF with double cable

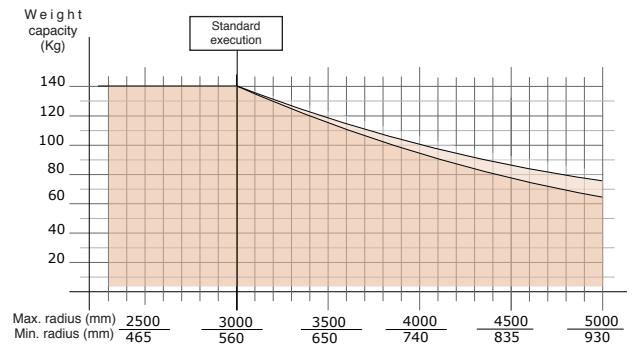
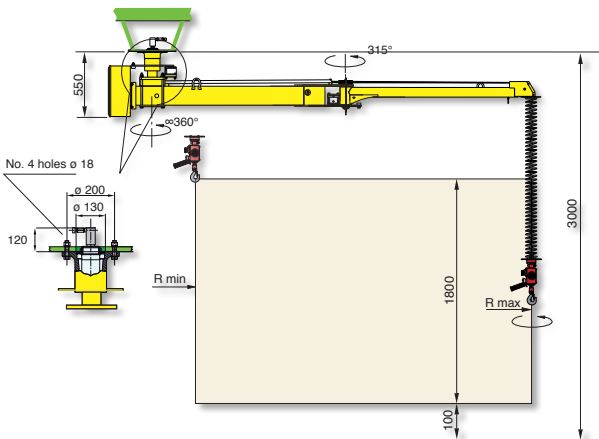
POSIFIL PF, equipped with special gripping tools, allows to handle loads in a weightless condition in any direction. The gripping tool is connected to the balancing group through two single steel cables to guarantee max safety. The particular double arm structure and middle joint makes it easy to operate within the entire working area.

## Posifil column mounted - PFC



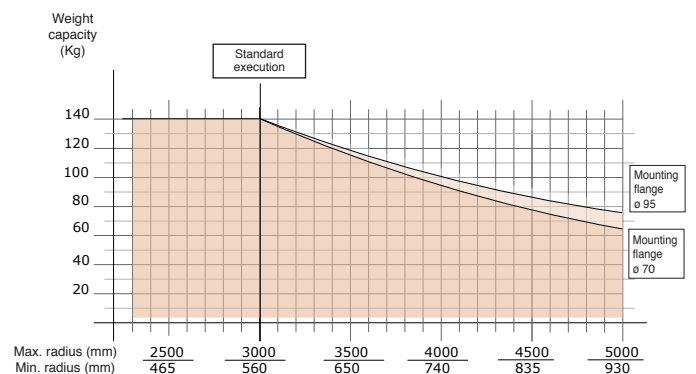
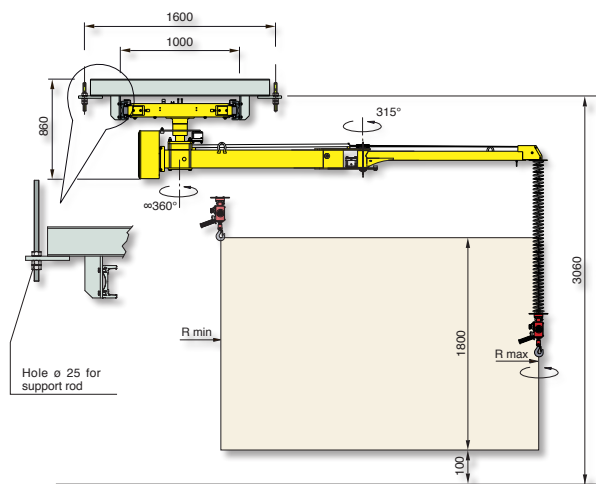
Structural versions: column mounted on fixed base-plate, autostable base-plate of our supply properly dimensioned.

## Posifil overhead mounted - PFF



Configuration and measurements may change upon the Customer's specific requirements

## Posifil overhead trolley mounted - PFS



Air supply: Dry and oil-free compressed air min constant 0.7÷0.8 MPa

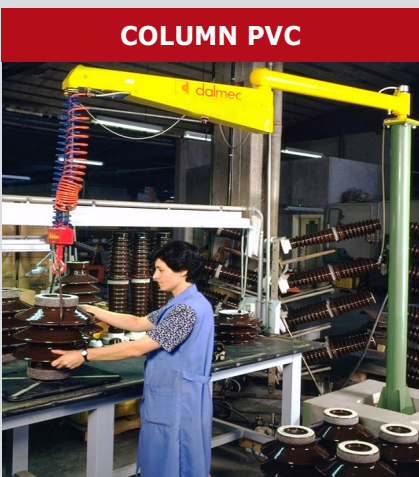


# MOVING TECHNOLOGIES

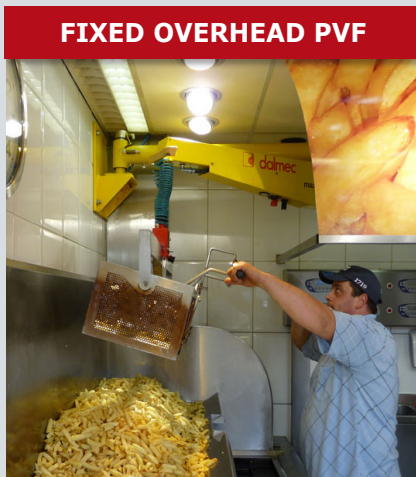


## POSIVEL® PV22 PV26

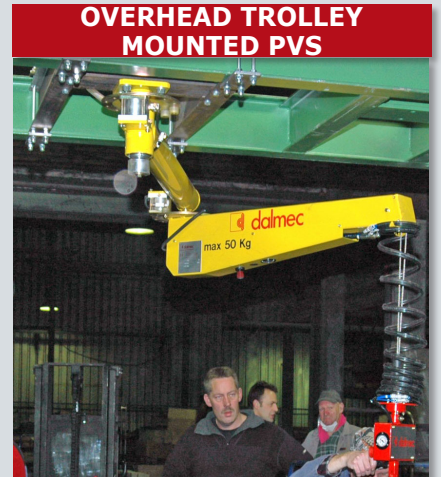
COLUMN PVC



FIXED OVERHEAD PVF



OVERHEAD TROLLEY MOUNTED PVS



 **dalmecc**  
Industrial Manipulators

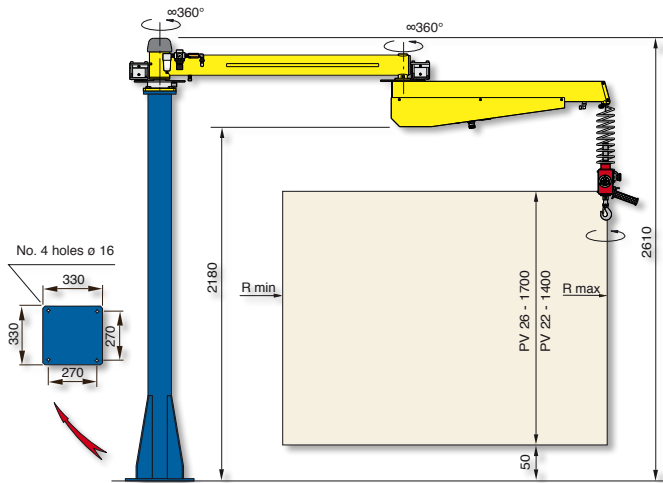
### Pneumatic Manipulator POSIVEL PV with double cable

POSIVEL PV, generally realized with hook, can be equipped with simple gripping tools to allow the handling of light loads in a weightless condition in any direction.

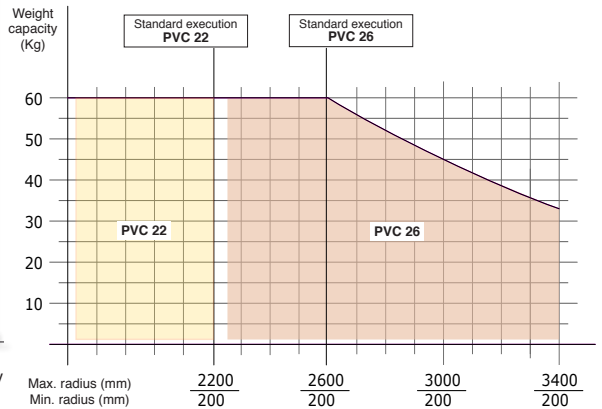
The particular double arm structure and medium joint makes it easy to handle and precise throughout the working area.

# POSIVEL® - PV22 PV26

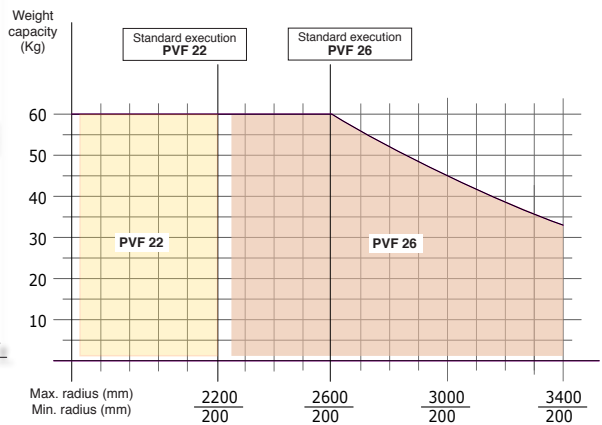
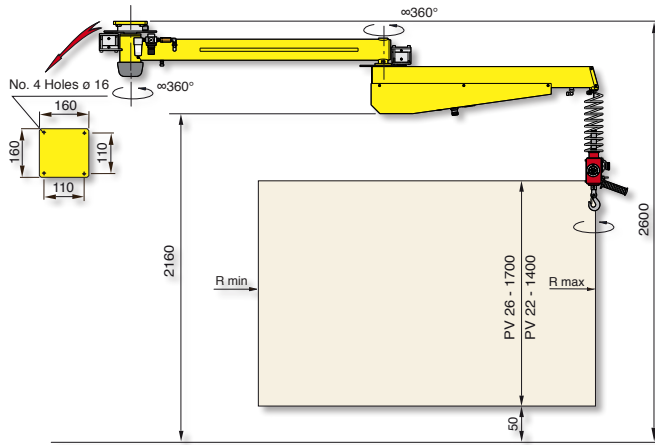
## Posivel column mounted - PVC



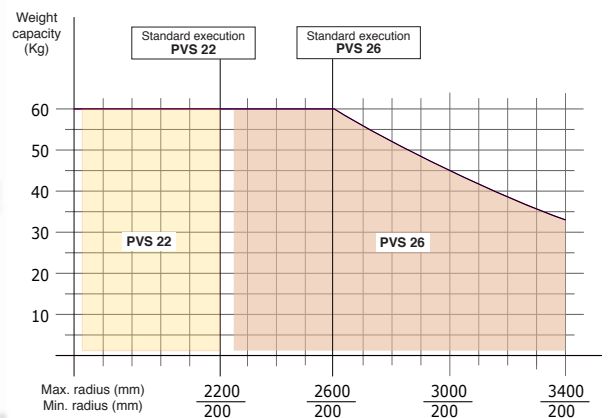
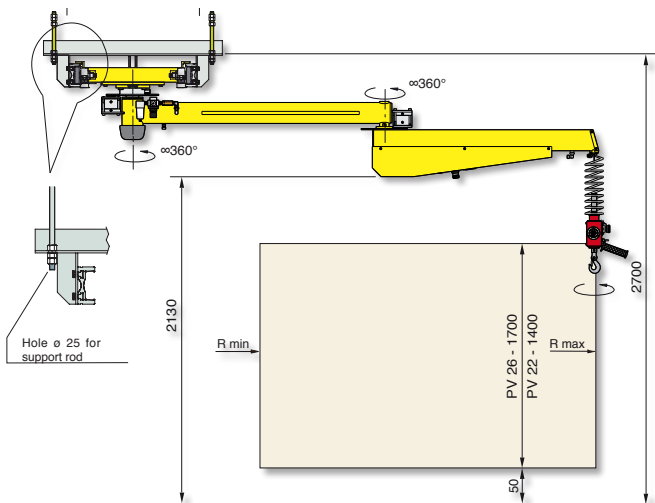
Structural versions: column mounted on fixed base-plate, autostable base-plate of our supply properly dimensioned.



## Posivel overhead mounted - PVF



## Posivel overhead trolley mounted - PVS



Air supply: Dry and oil-free compressed air min constant 0.7±0.8 MPa



Industrial Manipulators



# MOVING TECHNOLOGIES



## MINIPARTNER<sup>®</sup> - MP

MINIPARTNER MPS



MINIPARTNER MPS PLUS



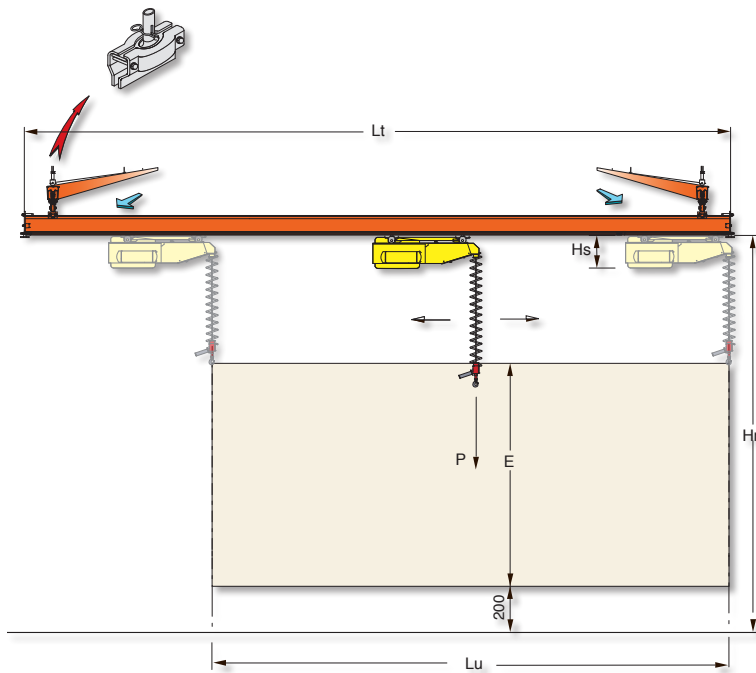
 **dalmec**  
Industrial Manipulators

### Pneumatic Manipulator MINIPARTNER MP with double cable

MINIPARTNER MP equipped with special gripping tools, allows to handle loads in a weightless condition in any direction. The gripping tool is connected to the balancing group by two singles cables to guarantee max safety. Mounted on a bridge crane with double runways, it offers an easy translation in order to cover a large working area.

# MINIPARTNER® - MP

## Minipartner overhead trolley mounted - MPS

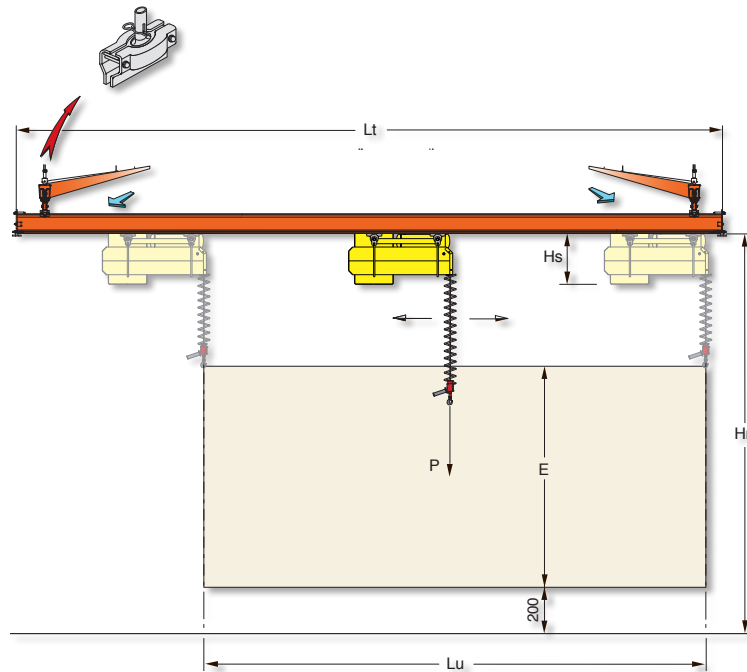


**MINIPARTNER overhead trolley mounted "MPS"**

Max weight capacity	P	80	Kg
Bridge length	Lt	4000÷7000	mm
Working length	Lu	3100÷6100	mm
Vertical lift	E	1800	mm
Overall dimension	Hs	320	mm
Height under bridge	Hr	3100	mm
Air supply	Dry and oil-free compressed air min constant 0.7÷0.8 MPa		

Configuration and measurements may change upon the Customer's specific requirements

## Minipartner Plus overhead trolley mounted - MPS



**MINIPARTNER PLUS**

MODEL	PLUS 8	PLUS 6	
Max weight capacity	P	170	220 Kg
Bridge length	Lt	4000÷7000	4000÷7000 mm
Working length	Lu	3250÷6250	3250÷6250 mm
Vertical lift	E	2000	1500 mm
Overall dimension	Hs	435	435 mm
Height under bridge	Hr	3150	2650 mm
Air supply	Dry and oil-free compressed air min constant 0.7÷0.8 MPa		

Configuration and measurements may change upon the Customer's specific requirements

Configuration and measurements may change upon the Customer's specific requirements



# MOVING TECHNOLOGIES



## SPEEDYFIL<sup>®</sup> - SP



SPC COLUMN



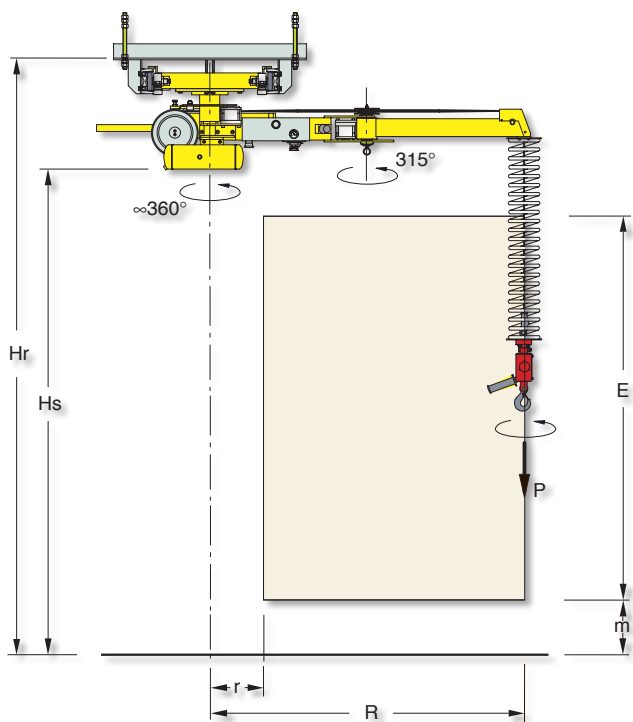
OVERHEAD TROLLEY  
MOUNTED SPS

 **dalmec**  
Industrial Manipulators

**Pneumatic Manipulator SPEEDYFIL SP with double cable**  
SPEEDYFIL SP equipped with simple gripping tools, allows the handling of light loads in a weightless condition, throughout the working area. The particular double arm structure with middle joint makes it easy to handle and precise throughout the working area. Generally overhead mounted with double track system, it offers an easy translation in order to cover a long working area.

# SPEEDYFIL® - SP

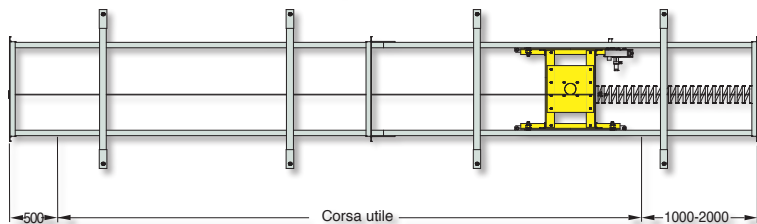
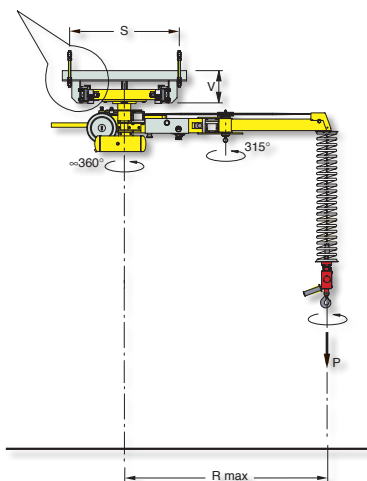
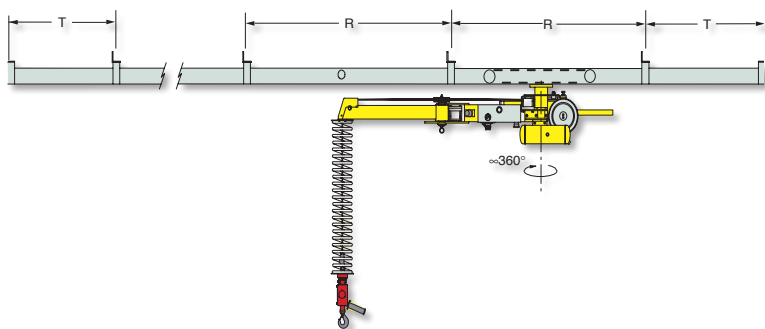
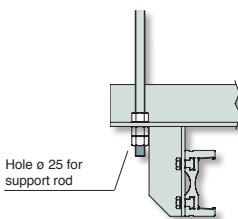
## Speedyfil overhead trolley mounted - SPS



SPEEDYFIL overhead trolley mounted "SPS" standard				
Max weight capacity	P	50	80	Kg
Track attachment height	Hr	3030	3030	mm
Overall dimensions	Hs	2500	2500	mm
Min radius	r	680	680	mm
Max radius	R	2000	1400	mm
Vertical lift	E	1650	1650	mm
Min height	m	100	100	mm
Air supply	Dry and oil-free compressed air min constant 0.7±0.8 MPa			

SPEEDYFIL overhead trolley mounted "SPS" increased vertical lift				
Max weight capacity	P	50	80	Kg
Track attachment height	Hr	3580	3580	mm
Overall dimensions	Hs	3050	3050	mm
Min radius	r	680	680	mm
Max radius	R	2000	1400	mm
Vertical lift	E	2150	2150	mm
Min height	m	100	100	mm
Air supply	Dry and oil-free compressed air min constant 0.7±0.8 MPa			

Track dimensions		
S	950	mm
R	2000	mm
T	1000	mm
V	220	mm



Configuration and measurements may change upon the Customer's specific requirements



# MOVING TECHNOLOGIES



## MEGAPARTNER<sup>®</sup> - MG

COLUMN MGC



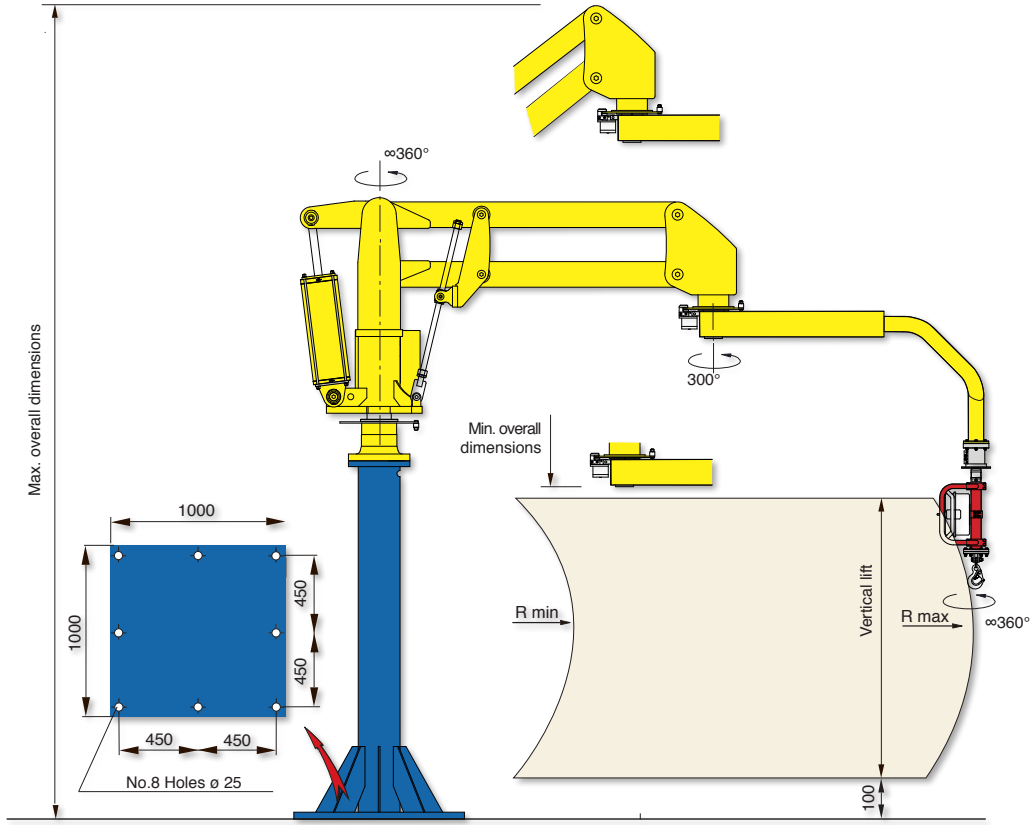
 **dalmeccan**  
Industrial Manipulators

### Pneumatic Manipulator MEGAPARTNER MG with articulated arm

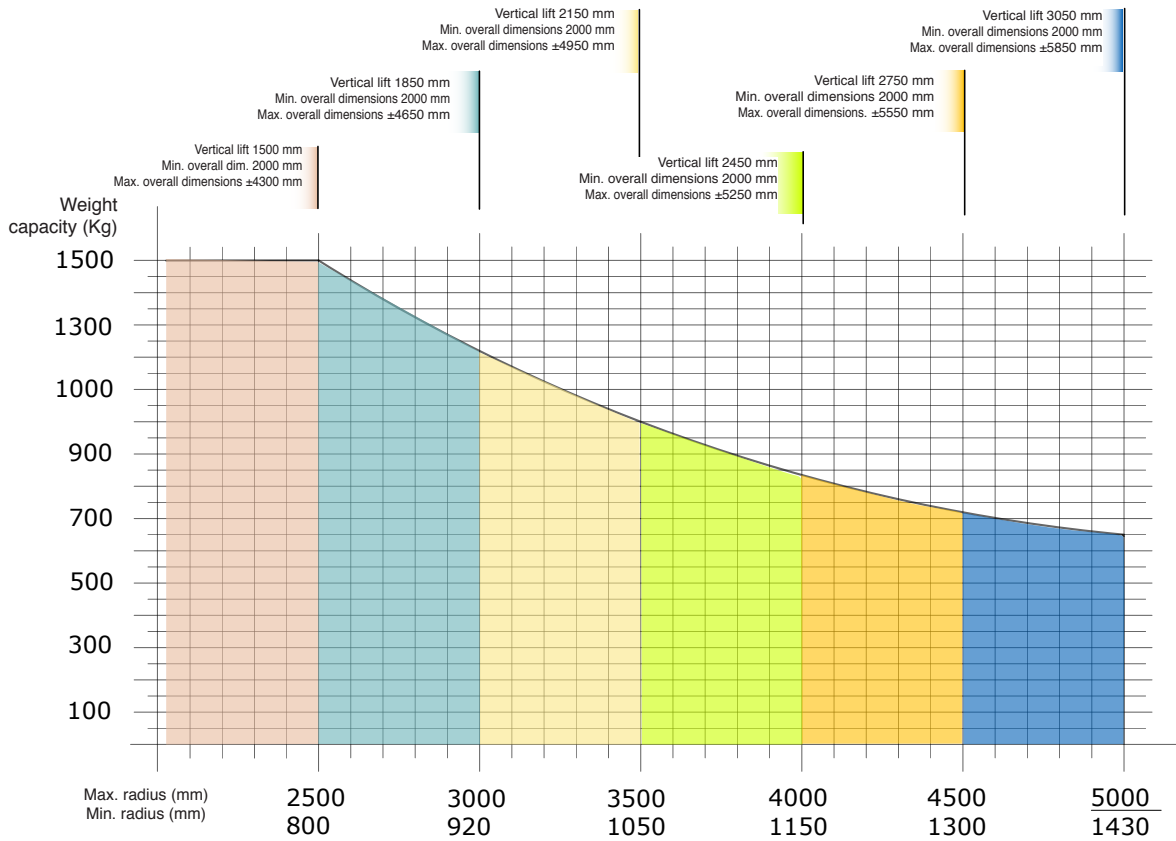
MEGAPARTNER MG, is a Manipulator with extremely high load capacity, is able to handle loads up to 1500 Kg and reach working radii up to 5000 mm with loads of 650 kg, maintaining a good handiness and fluidity, assuring the operator to work with moderate efforts in good ergonomic conditions and with the utmost safety.

# MEGAPARTNER® - MG

## Megapartner column mounted - MGC



Structural versions: column mounted on fixed base-plate.



Air supply: Dry and oil-free compressed air min constant 0.7÷0.8 MPa



Industrial Manipulators